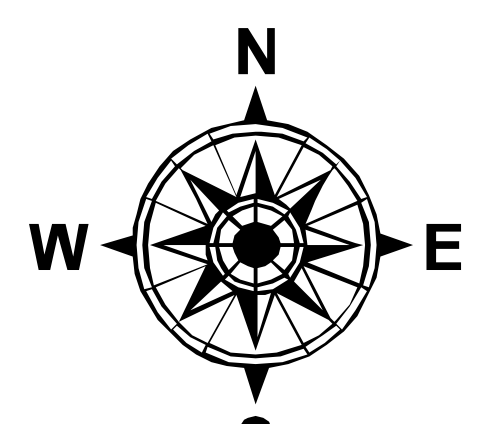


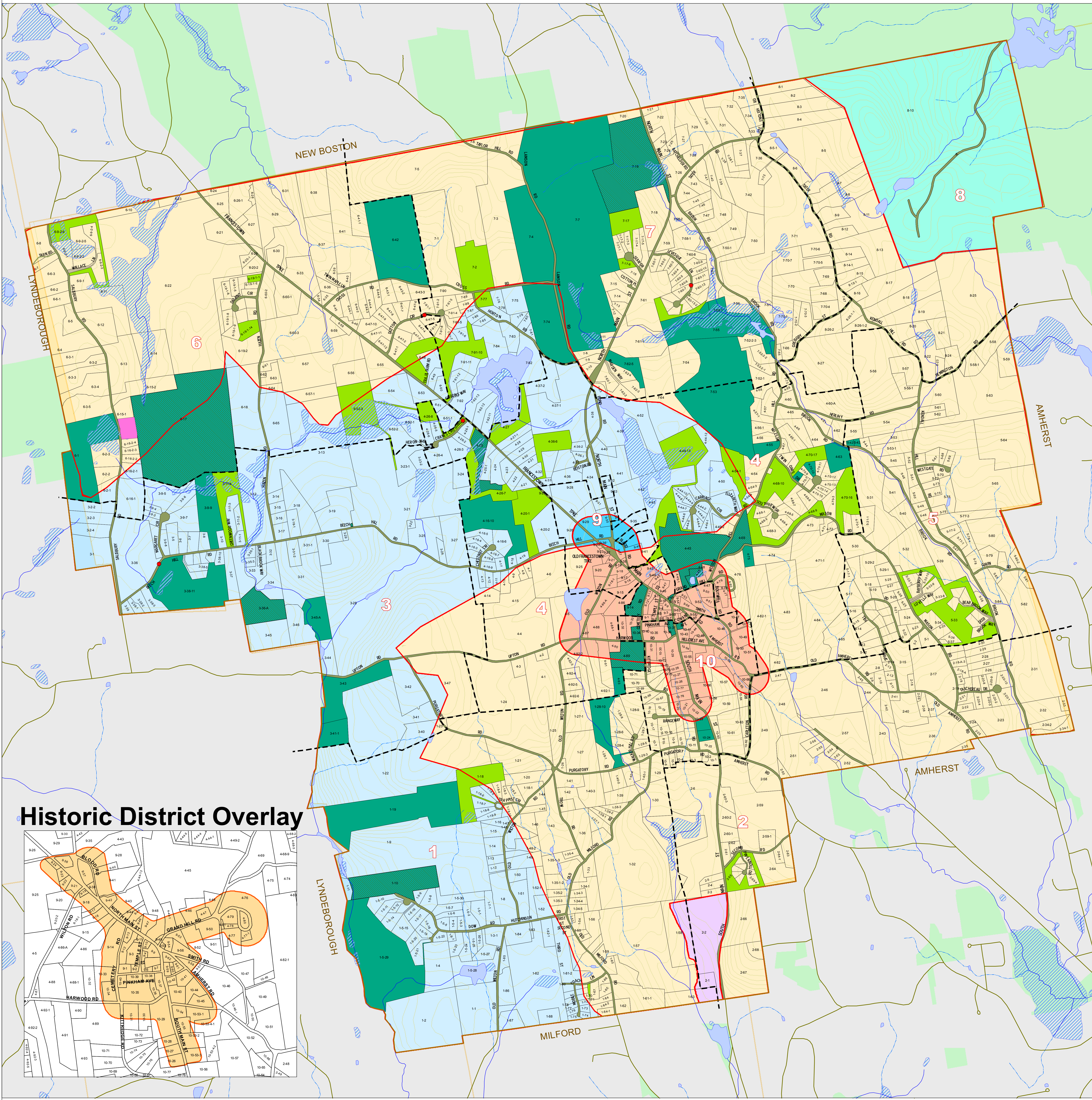
Maps prepared by the Nashua Regional Planning Commission are for planning purposes only. NRPC uses data gathered from multiple sources at various scales of accuracy. No warranties, expressed or implied, are provided for the data herein, its use, or its interpretation. Parcel lines displayed were digitized from local tax maps in 1996 and have been continuously updated through 2005 to capture changes. Roads and hydrography were digitized by the USGS and distributed through NH GRANIT. Conservation parcels and use restrictions were identified by Mont Vernon volunteers with assistance from NRPC.

MONT VERNON, NH, 2006

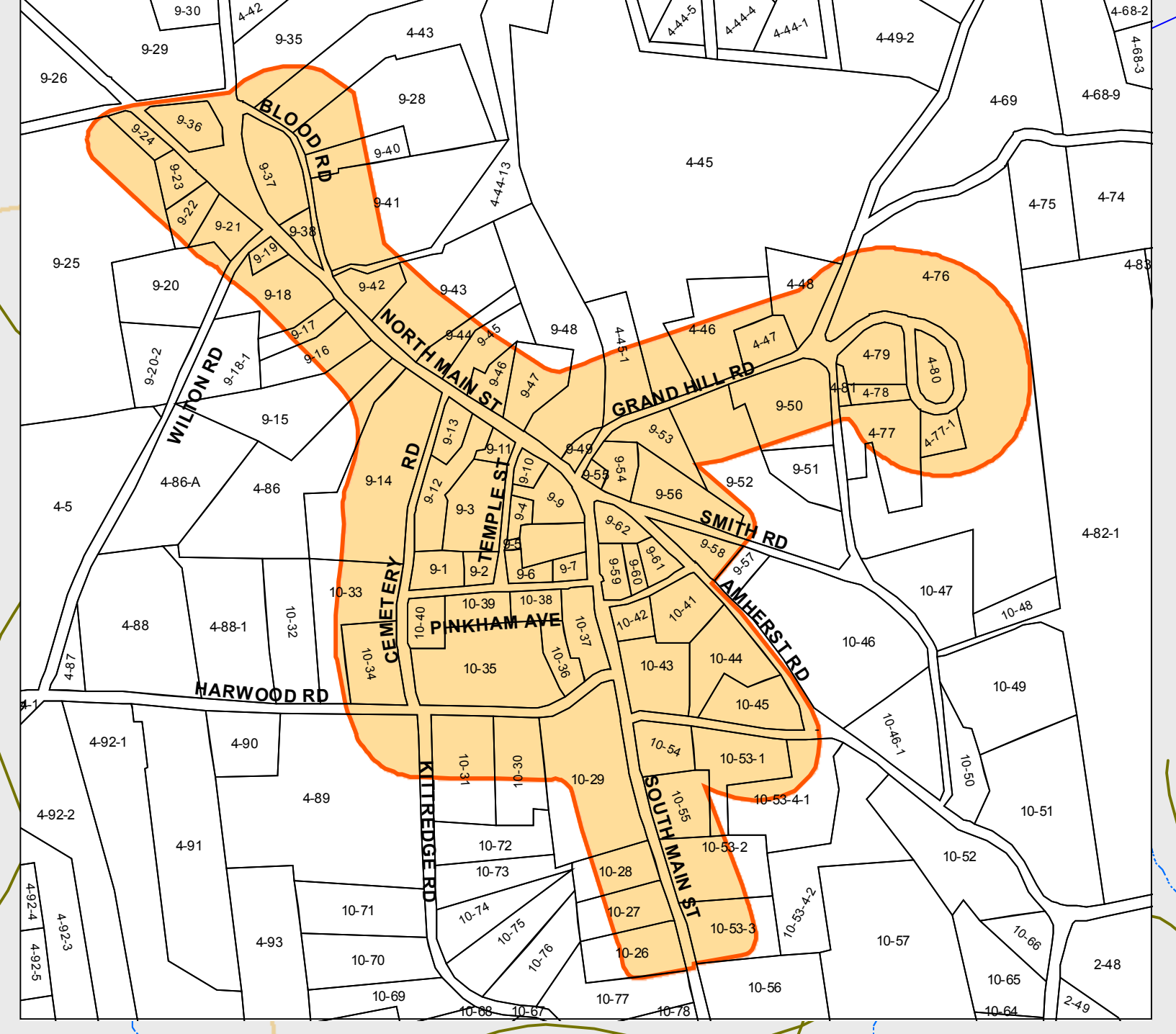
Zoning & Conservation Lands Map



Nashua Regional Planning Commission
115 Main Street PO Box 847 Nashua, NH 03061
www.nashuarpc.org



Historic District Overlay



- | | | | | |
|-------------------------------|--------------|-------------------------------|--|---|
| Roads | Reservoir | Tax Map Boundary and Number | Limited Commercial District | Permanent Open Space, Private Access |
| Mont Vernon Border | Wetland | Parcels and Lot-Sublot Number | Managed Commercial and Conservation District | Permanent Open Space, Public Access |
| New Hampshire Town Boundaries | River/Stream | Dry Hydrants | Residential District | Permanent Open Space Outside of Mont Vernon; Access Status Un-available |
| Stream | Lake/Pond | | Rural Residential District | Town Owned Land |
| Intermittent Stream | | | Watershed Residential District | |
| | | | Watershed Rural Residential District | |

